



## AVC-ENN41FT/2.8 AI

NDA  
COMPLIANT | CE | FC

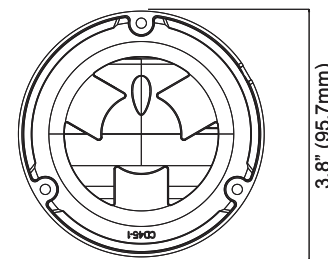
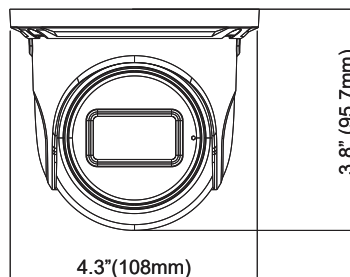
4MP H.265 NETWORK IR EYEBALL CAMERA

### OVERVIEW

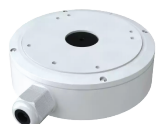
- H.265 Main Profile Video Compression Technology
- 4MP (2592 x 1520) H.265 Full Real Time Coding
- Max. Resolution: 2592 x 1520
- ICR Auto Switch
- True Day / Night
- Up to 100ft. Night Time Distance
- 3D DNR, Digital WDR
- Fixed 2.8mm Lens (100.4° FOV)
- ROI Coding
- Audio Input and Built-in Microphone
- Supports microSD slot for Edge/local recording
- Supports Smartphone, iPad, Remote Monitoring
- IP67 Ingress Protection
- Support Three Streams
- DC12V / PoE (<7.5W)
- Intelligent analytics
- NDA Compliant
- UL-listed

### DIMENSIONS

Unit : inch(mm)



### OPTIONAL ACCESSORIES



AVM-EDMTS-W-TL1



AVM-EWMTS-W-TL1

## SPECIFICATIONS

CAMERA					
Image Sensor	1/3" Progressive Scan CMOS				
Image Size	2592 x 1520				
Shutter Speed	1/2s to 1/100,000s				
Min. Illumination	Color: 0.005 lux @ F1.6(AGC ON); BW: 0 lux with IR				
IR Distance	Up to 98ft				
Lens	Fixed 2.8 mm @ F1.6 Horizontal FoV: 104° Vertical FoV: 55° Diagonal FoV: 125°				
Focus	Fixed				
Lens Mount	M12				
Day & Night	ICR				
Wide Dynamic Range	120dB				
Digital NR	3D DNR				
Backlight Compensation (BLC)	Yes				
Highlight Compensation (HLC)	Yes				
Defog	Yes				
S/N Ratio	≥50dB				
Angle Adjustment	Pan: 0°~360° ; Tilt: 0°~75° ; Rotation:0°~360				
VIDEO IMAGE					
Video Compression	Main stream: H.265+ / H.265 / H.264+ / H.264 Sub/third stream: H.265+ / H.265 / H.264+ / H.264 / MJPEG				
H.264 Compression Standard	Baseline Profile/Main Profile/High Profile				
Resolution	4MP (2592×1520), 2K (2560×1440), 3MP (2304×1296), 1080P (1920×1080), 720P (1280×720), D1, CIF, 480 × 240, VGA (640×480)				
Main Stream	4MP (2592×1520), 2K (2560×1440), 3MP (2304×1296), 1080P (1920×1080), 720P (1280×720), D1, CIF, 480 × 240, VGA (640×480)				
Sub Stream	60Hz: 720P/D1/CIF/VGA (1~30fps); 50Hz: 720P/D1/CIF/VGA (1~25fps)				
Third Stream	60Hz: D1/480x240/CIF (1~30fps); 50Hz: D1/480x240/CIF (1~25fps)				
Video Bit Rate	64 Kbps ~ 8 Mbps (CBR / VBR Adjustable)				
Image Settings	ROI, Saturation, Brightness, Hue, Contrast, Wide Dynamic, Sharpness, Image Mirror, Image Flip, NR, etc. adjustable through client software or web browser				
ROI	Each ROI to be configured separately				
NETWORK / INTERFACE					
Network	1 x RJ45 10M / 100M Self-Adaptive Ethernet port				
Network Protocol	UDP, IPv4, IPv6, DHCP, NTP, RTSP, RTP, RTMP, RTCP, PPPoE, DDNS, SMTP, FTP, SNMP, HTTP, HTTP POST, 802.1x, UPnP, HTTPs, QoS				
Interface Protocol	ONVIF (Profile S, G, T, M)				
Web Browser	IE11 (Plug-in required) / Google Chrome 89.0+ / Edge 89.0+ / Firefox 87.0+ / Safari 14.0+				
Online Connection	Support simultaneous monitoring for up to 10 users; Support multi-stream real time transmission				
Security	Video encryption, firmware encryption, HTTPS encryption, configuration encryption, illegal login lock, IP address filtering, 802.1x authentication, basic and digest authentication for HTTP/RTSP				
Storage	Support simultaneous monitoring for up to 10 users; Support multi-stream real time transmission				
Online Connection	Micro SD/SDHC/SDXC Slot (up to 256GB) with video and still image capture function				
Video Output	No				
Audio	1CH Audio Input; 1CH Built-in MIC				
Audio Compression	G711A / U				
Alarm	No				
Hardware Reset	Yes				
DORI DISTANCE					
	Lens	Detect	Observe	Recognize	Identify
	2.8mm	199.11ft (60.69m)	79.65ft (24.28m)	39.82ft (12.14m)	19.91ft (6.07m)
FUNCTIONS					
Remote Monitoring	Web Browser Interface, Mobile App, AVYCON CVMS 2.0				
Smart Alarm	Motion detection, SD card error, SD card full, IP address conflict, cable disconnection				
Smart Analytics	Line crossing, region intrusion/entrance/exiting detection, loitering detection, illegal parking detection, abandoned/missing object detection, Target counting by line/intrusion area/heat map, exception detection, face detection and face capture				
Video Metadata	Simultaneously captures human body, motor vehicle and non-motor vehicle and extracts 13 human features, 5 motor vehicle features and 1 non-motor vehicle feature				
General Function	Watermark, video mask, heartbeat, image distortion correction, corridor pattern				
GENERAL					
Power Supply	DC12V / PoE (IEEE802.3af)				
Power Consumption	<6.5W				
Operating Environment	-22°C ~ 140°C (-30°F ~ 60°F) Humidity: less than 95% (non-condensing)				
Storage Environment	-22°C ~ 149°C (-30°F ~ 65°F) Humidity: less than 95% (non-condensing)				
Dimensions (in)	Ø 4.25 × 3.76				
Weight (lb)	Approx. 1.06 lbs				
Ingress Protection	IP 67				
Certificate	CE, FCC				
Installation	Ceiling mounting; Wall mounting				
Environmental Protection	Complies with Directive EU RoHS, WEEE(2012/19/EU), directive 94/62/EC and REACH (EC1907/2006)				